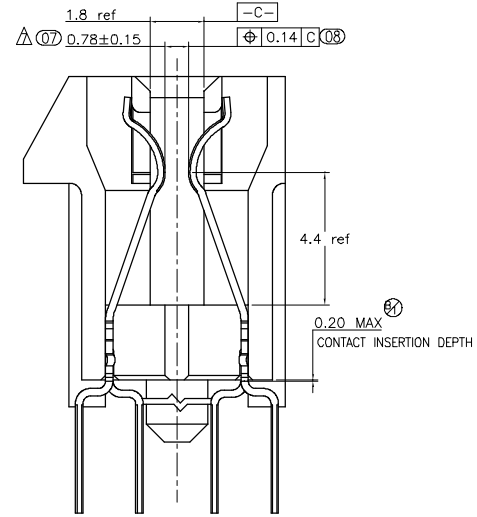
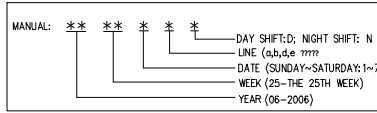
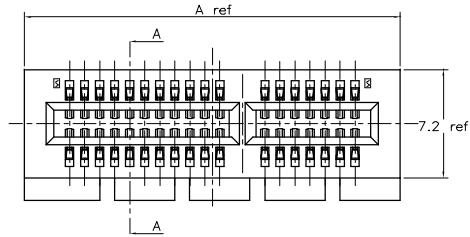


THE INFORMATION CONTAINED IN THIS DOCUMENT IS PROPRIETARY TO JEN JIA PRECISION TECHNOLOGY CO.,LTD. ANY REPRODUCTION IN PART OR WHOLE WITHOUT PRIOR WRITTEN APPROVAL OR AUTHORIZATION OF JEN JIA PRECISION TECHNOLOGY CO.,LTD IS STRICTLY PROHIBITED.

RoHS COMPLIANT

REVISIONS				
REV	ECN NO.	DESCRIPTION	APPROVED BY	DATE
A		ISSUE A	JASON MENG	2011-06-09



SECT A-A

- CONTACT RETENTION FORCE: 0.3Kgf Min.
- POSSIBLE TO MATE/UNMATE THE CHECK GAUGE OF 1.7mm THK SMOOTHLY.
- DATE CODE HOT STAMP: CHARACTERS HEIGHT 2.0: SEE Fig-1
- MATERIAL: SEE TABLE
- DIMENSIONS WITH MARK "⊗" MUST BE CONTROLLED BY FAI.
- CADMIUM CONTENT: 5ppm UNDER.
- △ INDICATE DIMENSIONS SHOULD BE CONTROLLED BY CPK

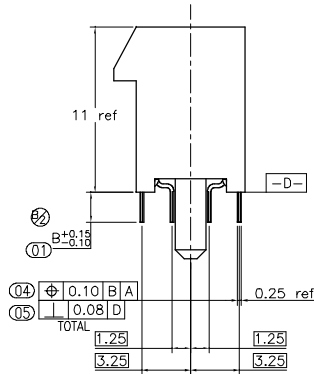
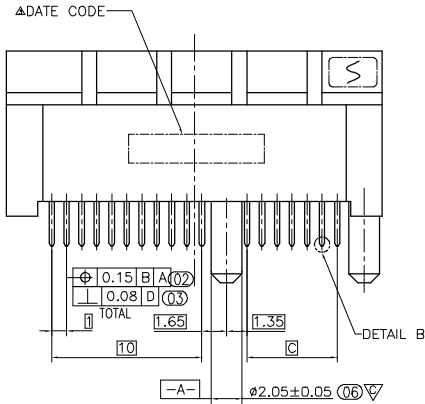
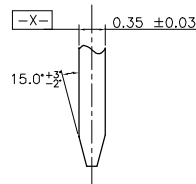
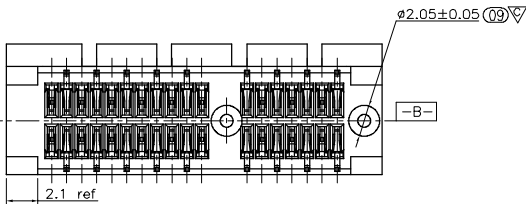


TABLE:

BLACK	PA6T	C5191-H	G/F	64 PIN	3.1	39	20
膠芯顏色	膠芯材質	端子材質	端子電鍍	PIN 數	B~尺寸	A~尺寸	C~尺寸



DO NOT SCALE DRAWING

DIMENSIONS:

MM [INCH]  INCH [MM]  MM ONLY

UNLESS OTHERWISE SPECIFIED, GENERAL TOLERANCE:

DECIMALS ANGLES  
 X. ±0.38 [0.015] X' ±3°  
 .X ±0.25 [0.010] .X' ±1.0°  
 .XX ±0.13 [0.005]

CAD GENERATED DRAWING, DO NOT MANUALLY UPDATE

THIRD ANGLE PROJECTION



JJP Jen Jia Precision Technology Co., Ltd.

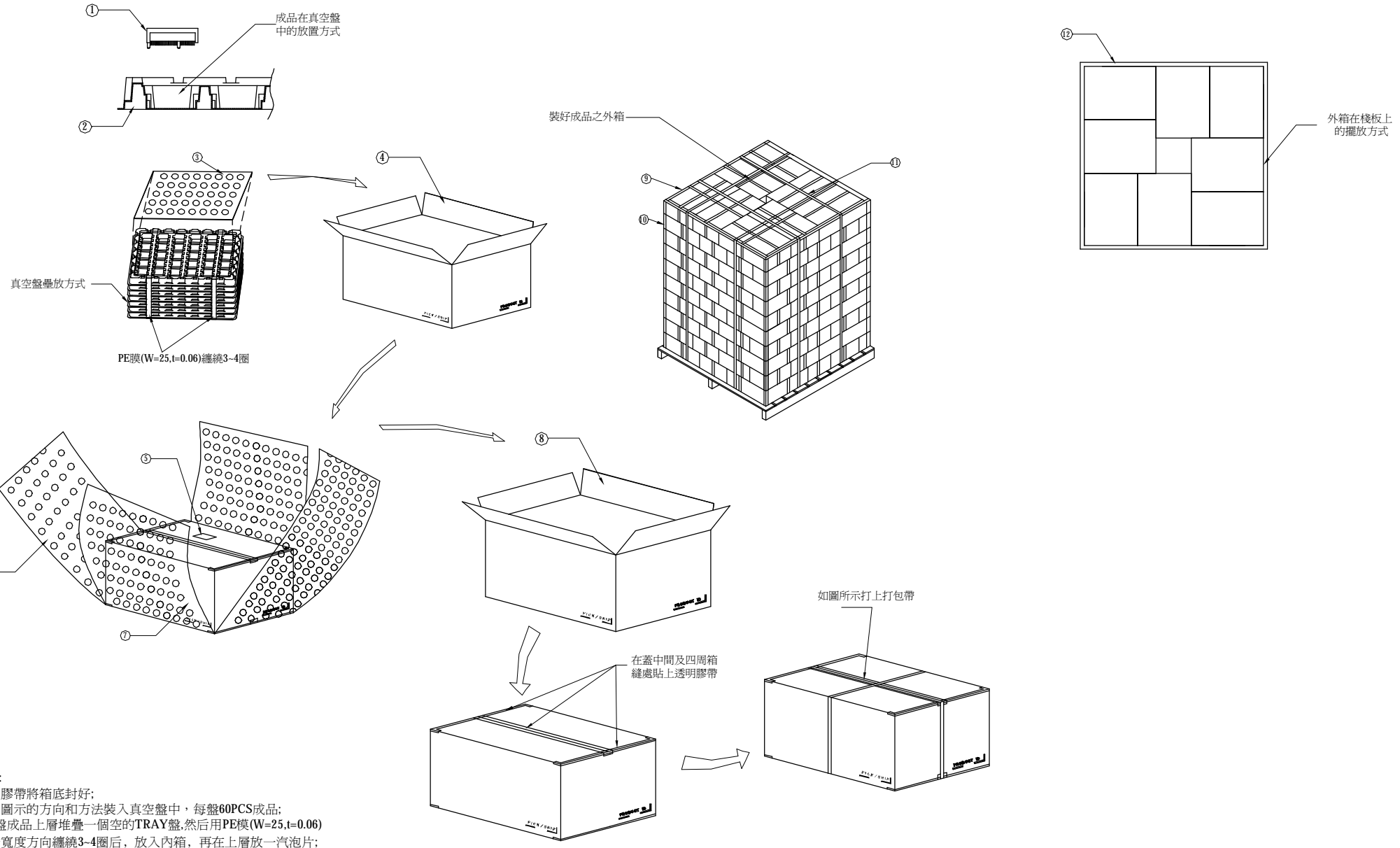
TITLE		PCI EXPRESS SERISE CONNECTOR	
PART NO.	J1695-301FD64DBS0600219	APPROVED BY	JASON MENG
DRAWING NO.	J1695-301FD64DBS0600219	CHECKED BY	STEVEN LIU
MATERIAL		DRAWN BY	John HE
FINISH		GENERATD DATE	2011-06-09
SCALE	1:1	SHEET	1/1
REV.	A	SIZE:	A4
		FILE NO.:	JJP-A-05-003

THE INFORMATION CONTAINED IN THIS DOCUMENT IS PROPRIETARY TO JEN JIA PRECISION TECHNOLOGY CO.,LTD, ANY REPRODUCTION IN PART OR WHOLE WITHOUT PRIOR WRITTEN APPROVAL OR AUTHORIZATION OF JEN JIA PRECISION TECHNOLOGY CO.,LTD IS STRICTLY PROHIBITED.

RoHS COMPLIANT

REVISIONS

REV	ECN NO.	DESCRIPTION	APPROVED BY	DATE
A		ISSUE A	JASON MENG	2011-06-09



NOTES:

1. 包裝方式:
- A: 先用透明膠帶將箱底封好;
- B: 將成品以圖示的方向和方法裝入真空盤中, 每盤60PCS成品;
- C: 每堆疊5盤成品上層堆疊一個空的TRAY盤, 然後用PE膜(W=25,t=0.06)按圖示沿寬度方向纏繞3-4圈后, 放入內箱, 再在上層放一氣泡片;
- D: 裝滿一箱後, 將箱蓋蓋好;
- E: 用透明膠帶將上箱蓋封好, 同時也要將箱蓋四周的縫隙封好;
- F: 封好內箱後以圖示貼上標籤;
- G: 再將內箱按圖示包裝放入外箱, 將箱蓋蓋好;
- H: 用透明膠帶將外箱上箱蓋封好, 同時也要將箱蓋四周的縫隙封好;
- I: 封好外箱後用打包帶以圖示的方式將外箱紮緊。
- J: 外箱包裝好後以圖示的方式進行棧板包裝。外箱在棧板上的放置方向如示意圖所示, 每層放8PCS外箱, 層與層之間要交錯放置, 如包裝圖所示。每棧板堆疊10層, 堆放完畢後, 依圖所示在側面放入上邊條和側邊條, 並用打包帶將整個棧板紮緊(打包帶位置如圖所示)。最後用PE膜至少10層將整個棧板封好。
2. 包裝數量:
- 2.1. 60PCS/Tray, 300PCS/Carton, 共成品300PCS.
- 2.2. 每棧板總共放80PCS外箱, 每棧板共包裝成品24KPCS.

ITEM	DESCRIPTION	SPEC	QTY
1	PCI-E 64P 成品		24KPCS
2	真空盤	333*275*24.3	480PCS
3	氣泡片	310*265*8	80PCS
4	內箱	338*285*124	80PCS
5	標籤	65*40*0.12	80PCS
6	氣泡片	1000*292*4	80PCS
7	氣泡片	895*345*4	80PCS
8	外箱	364*311*164	80PCS
9	上邊條	980*55*55*5	4PCS
10	側邊條	1620*55*55*5	4PCS
11	打包帶	14*1.2mm	包裝時定
12	木棧板	1130*1130*120	1PCS

DIMENSIONS:  
 MM [INCH]  INCH [MM]  MM ONLY

UNLESS OTHERWISE SPECIFIED,  
 GENERAL TOLERANCE:

DECIMALS ANGLES  
 X. ±0.38 [0.015] X° ±3'  
 .X ±0.25 [0.010] .X° ±1.0'  
 .XX ±0.13 [0.005]

CAD GENERATED DRAWING,  
 DO NOT MANUALLY UPDATE

THIRD ANGLE PROJECTION

JJP Jen Jia Precision Technology Co., Ltd.			
TITLE	PCI EXPRESS 64PIN CONNECTOR PACKING		
PART NO.	J1695-301FD64DBS0600219	APPROVED BY	JASON MENG
DRAWING NO.	J1695-301FD64DBS0600219	CHECKED BY	STEVEN LIU
MATERIAL		DRAWN BY	John HE
FINISH		GENERATD DATE	2011-06-09
SCALE	1:1	SHEET	1/1
REV.	A	SIZE:	A4
FILE NO.: JJP-A-05-003			

DO NOT SCALE DRAWING

A B C D E

1 2 3 4 5 6 7 8